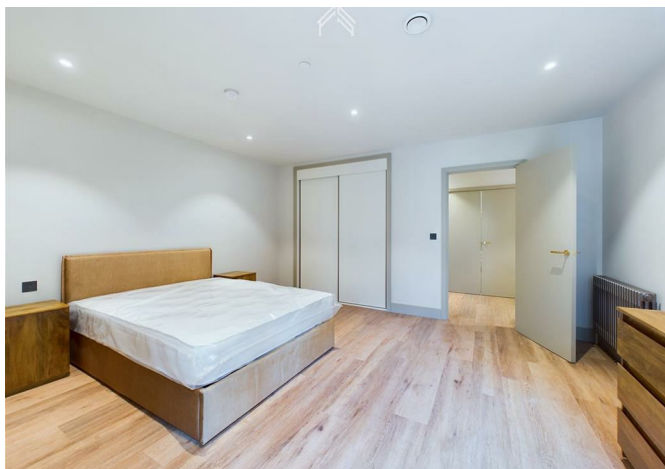
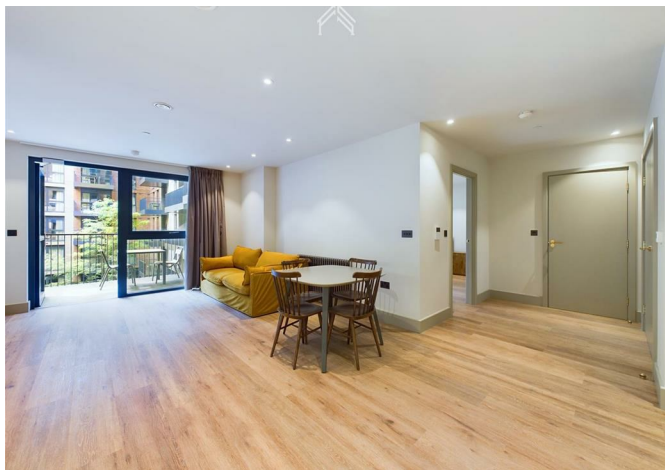




5435432 The Sessile, Ashley Road, London, N17 9ZS
£2,195



5435432 The Sessile, Ashley Road, London, N17 9ZS

£2,195

Enjoy all-inclusive living with full gym membership and ultrafast Wi-Fi included in the rent. Benefit from 24/7 on-site management, an air-conditioned residents' gym, calm lounge spaces, secure parcel lockers and bike storage. Pet-friendly community, with everything managed via the resident app. Images show a comparable apartment within the building; exact layout, floor and view may vary and are subject to availability. Additional incentives may be available.

- Gym
- Wifi Included
- Bike Storage
- Pets Allowed
- Communal Gardens
- 24h Concierge Service
- Private Dining Room
- 12 min to Central London
- Professional Management on site

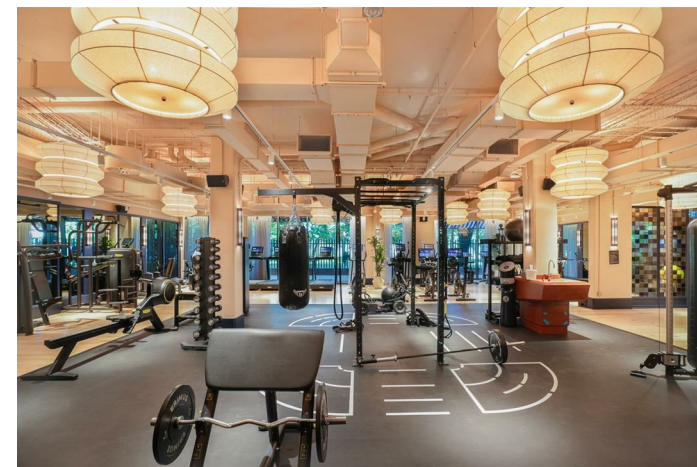
Description

Situation

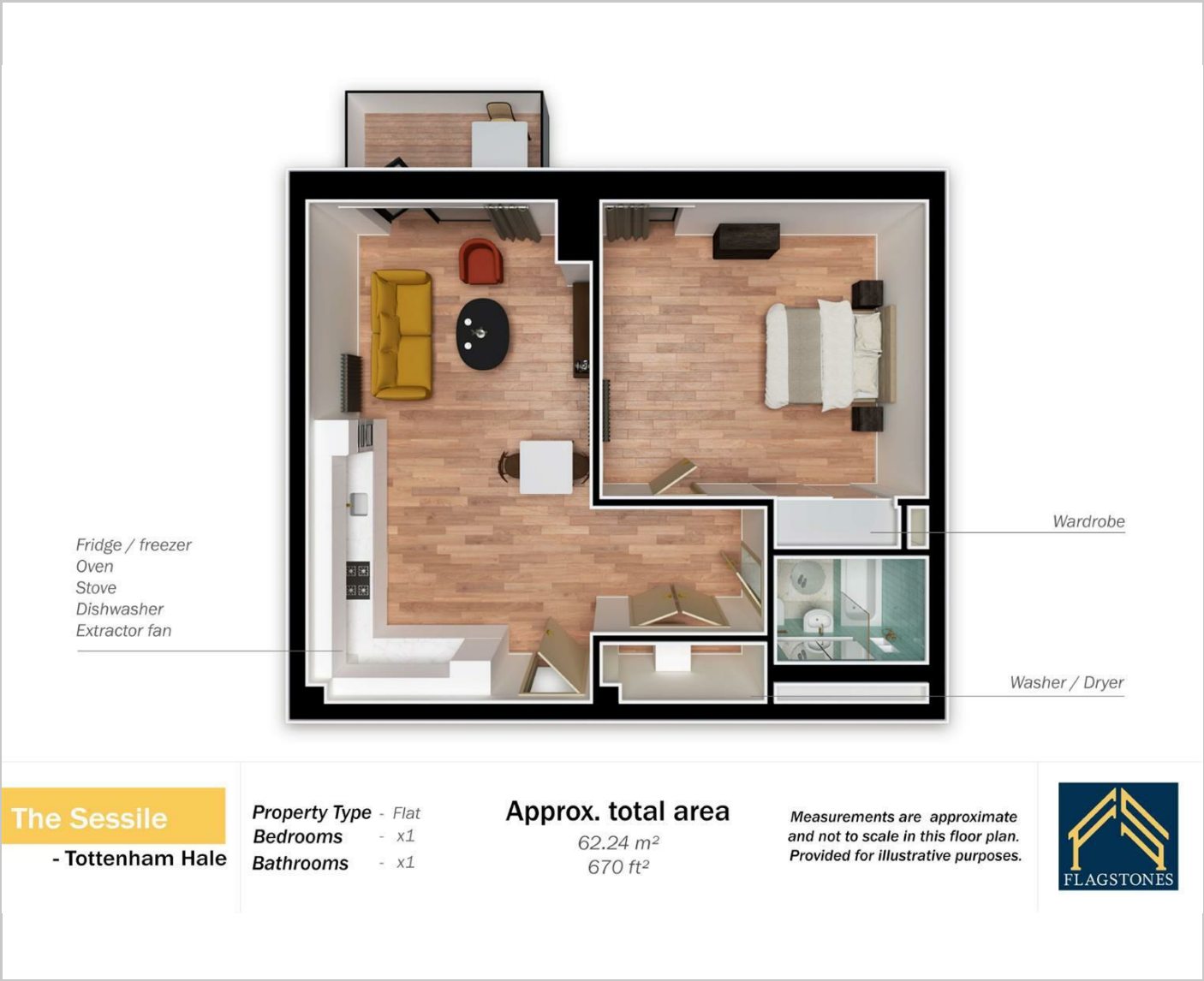
Furnished/unfurnished

Council Tax Band: B

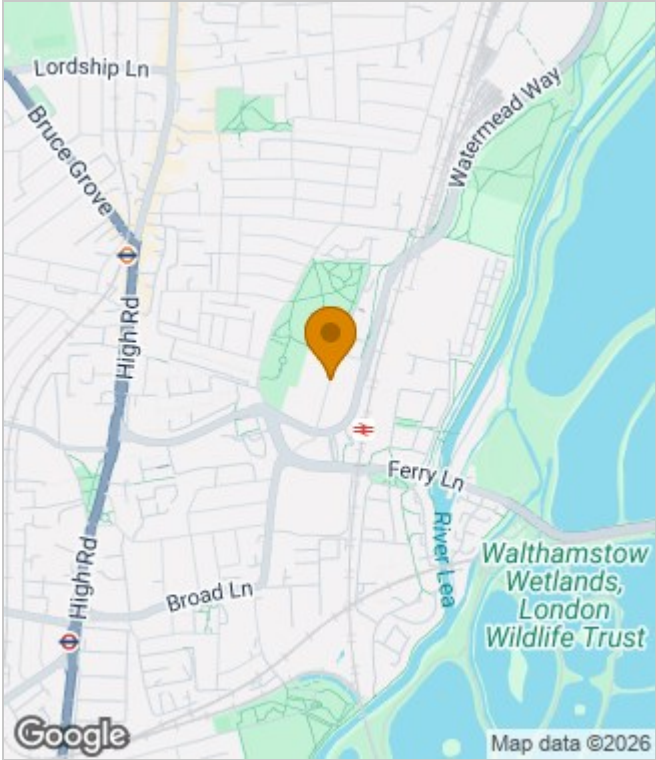
Available:



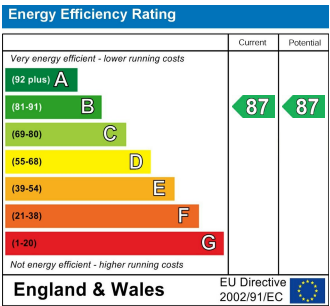
Floor Plans



Area Map



Energy Performance Graph



These particulars, whilst believed to be accurate are set out as a general outline only for guidance and do not constitute any part of an offer or contract. Intending purchasers should not rely on them as statements of representation of fact, but must satisfy themselves by inspection or otherwise as to their accuracy. No person in this firms employment has the authority to make or give any representation or warranty in respect of the property.